

# Phonak Roger User Manual



# Signal Flow



## Using the Roger Microphones

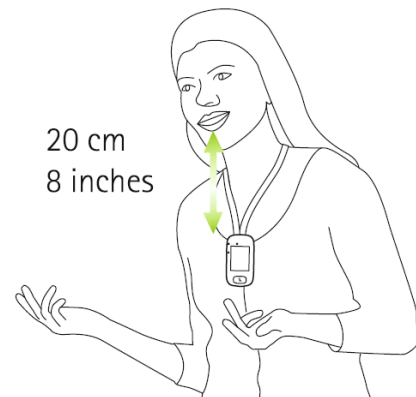
The Touchscreen Mic must be switched on for the Roger microphones to work. All equipment is paired and ready to use.

Switch on the Touchscreen mic via the ON/OFF button on the side - press and hold until you see the screen illuminate. Hang the Roger Touchscreen mic around the speakers neck with the lanyard. The mic should be within 8 inches (20cm) from the speakers mouth. The lanyard can be adjusted as needed.

The mic can be muted by pressing the mute button and will flash red when muted.

The screen will shut down to save power, the mic will still be on and active. To access the screen, do a quick press of the ON/OFF button.

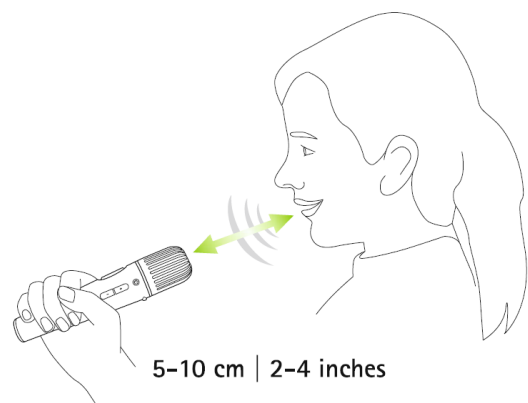
**\*\*\* The Touchscreen Mic must be upright at all times \*\*\***



Switch on the Passaround mics via the ON/OFF button on the side - press and hold until you see the LEDs illuminate.

The ring LED will illuminate green indicating it is active and picking up sound. It is set to voice activation, so when spoken into, you will see it light up green. If used in the stand, the mic should be spoken into approximately 30 - 40cm (12" - 16") away. If picked up, the mic should be spoken into approximately 5 - 10cm (2" - 4") away.

The mic can be muted by taking it out of the stand and placing flat on the table. It will flash red to indicate it is muted.



## DigiMaster Loudspeaker

The DigiMaster speaker should be fitted onto the tripod stand and connected to power. There is an ON/OFF switch underneath the speaker - it is recommended to leave this on and simply turn on and off at the mains plug.

When talking into either the Roger Touchscreen or Passaround mics, you will be able to hear speech from the speaker.

To adjust the volume of the loudspeaker, scroll across to page 2 on the Touchscreen mic and click on the Soundfield/loudspeaker icon. From here you can increase or decrease the volume as needed.

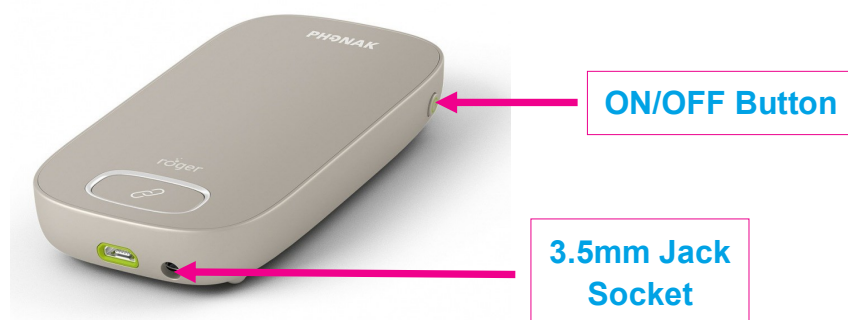


## Multimedia Hub

Switch on the Multimedia Hub by pressing the ON/OFF button on the side of the device for 3 seconds. The green indicator lights will flash on start up.

Locate the 3.5mm to 3.5mm jack or relevant audio lead. Plug one end into the bottom of the Multimedia Hub and the other end into the 3.5mm headphone socket of your device. Any audio played from the device will now be heard on the Neckloops and Digimaster speaker.

You can alter the volume via your device or on the Touchscreen Mic.



**Refer to the 'Connecting Roger to PC' guide on how to connect the Roger equipment to a PC for Teams calls.**

## Touchscreen Mic Settings

*NOTE: Altering the settings could leave the equipment non-functional. Only change the settings if you have had the relevant training.*

Settings for the equipment can be changed within the Touchscreen Mic. Scroll across to page 3 and click on 'Settings'. Enter the passcode '1111'.

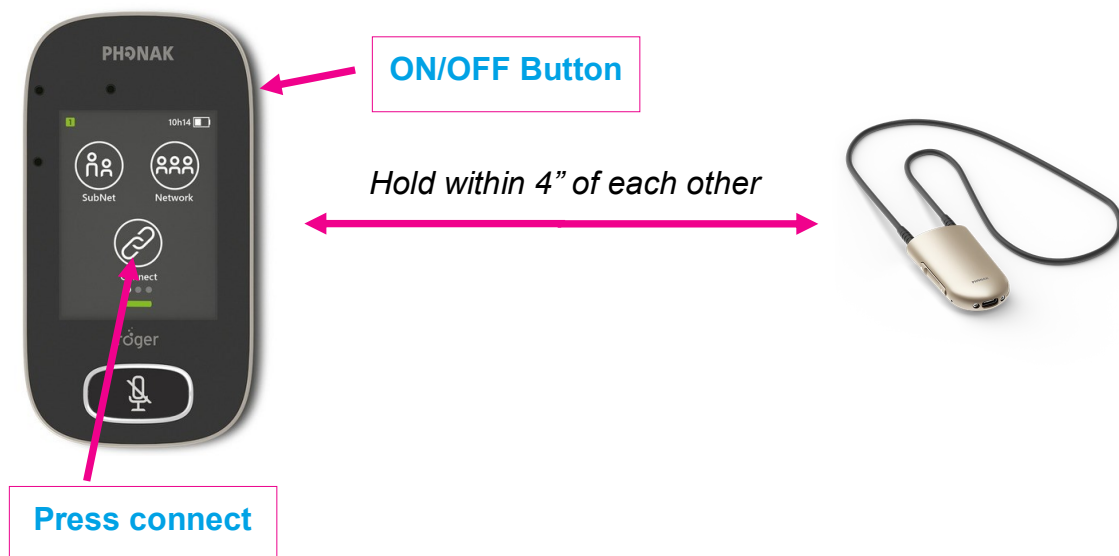
To change the passaround mic mode, within the settings menu, click on 'Passaround Mics'. Click on 'PTT (push to talk)'. Select activate. To speak using a passaround mic, you must now press the large button on the mic and the ring LED will illuminate green to show it is active. All other passarounds will illuminate orange and cannot be used at the same time. Once finished, press the large button again and the green ring LED will turn off. The other passarounds can now be used.

To return back to voice activated, follow the above steps, but select 'Deactivate' on the PTT mode.

## Connecting Devices

All Roger devices connect to the Touchscreen mic and have already been paired.

If the pairing is lost and you need to re-pair, ensure all Roger devices you wish to connect are switched on and hold within 4" of the Touchscreen Mic. Press the connect button on the home screen of the Touchscreen mic. The screen will say 'Roger Device Connected' upon successful pairing.



*To add more passaround mics from a different network, follow the above steps. Once finished, ensure you re-pair those mics back to its original touchscreen mic.*

*It is recommended to **NOT** pair 2 touchscreen mics together as this will disable the network for the other system. You will have to create a new network and re-pair all equipment back to the original touchscreen mic.*

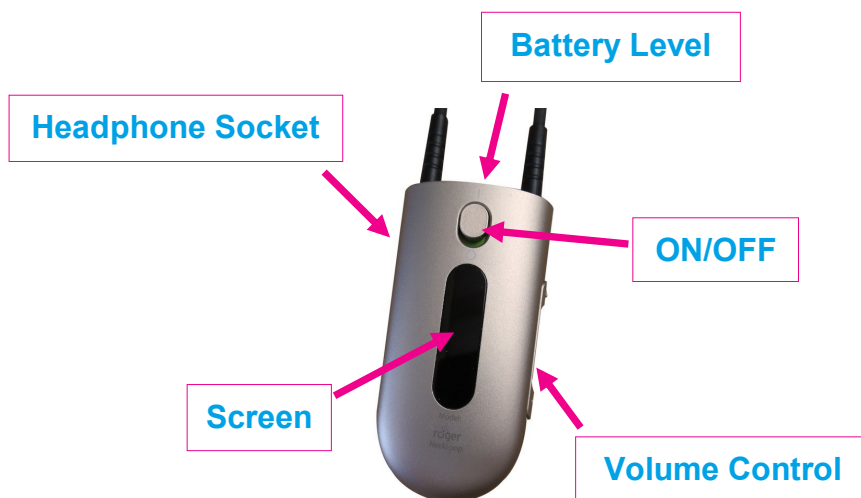
## NeckLoop Receivers

Switch on via the ON/OFF slider. There is a battery indicator on top of the unit. The Neckloop must be placed around the users neck, the loop part of the unit will unplug.

**The hard of hearing user will have to switch their hearing aids to the telecoil 'T' setting.**

Alter the volume control via the + and - buttons on the side of the unit. You can check the audio levels by looking at the screen on the front when changing the volume.

To test the system, or if someone does not have hearing aids, you can insert headphones into the 3.5mm headphone socket on the unit.



## Charging Case

Ensure all units are switched off and place in the charging case. *The Neckloops must be placed in the black inserts.*

Connect the power lead to the socket at the back of the case and to mains power.

**Ensure the lid is left open while charging to prevent a build up of heat**

While charging, the units will flash green. When fully charged the LEDs will change to a solid green.

## Charging & Operation Time Info;

### Touchscreen Mic;

Charge time: 100% charged after 2 hours

Operation time: Approx. 10 Hours

### Passaround mic;

Charge time: 100% charged after 2 hours

Operation time: Approx. 8 Hours

### Multimedia Hub;

Charge time: 100% charged after 2 hours

Operation time: Approx. 10 Hours

### NeckLoop Receiver;

Charge time: 100% charged after 3 hours

Operation time: Approx. 10 Hours